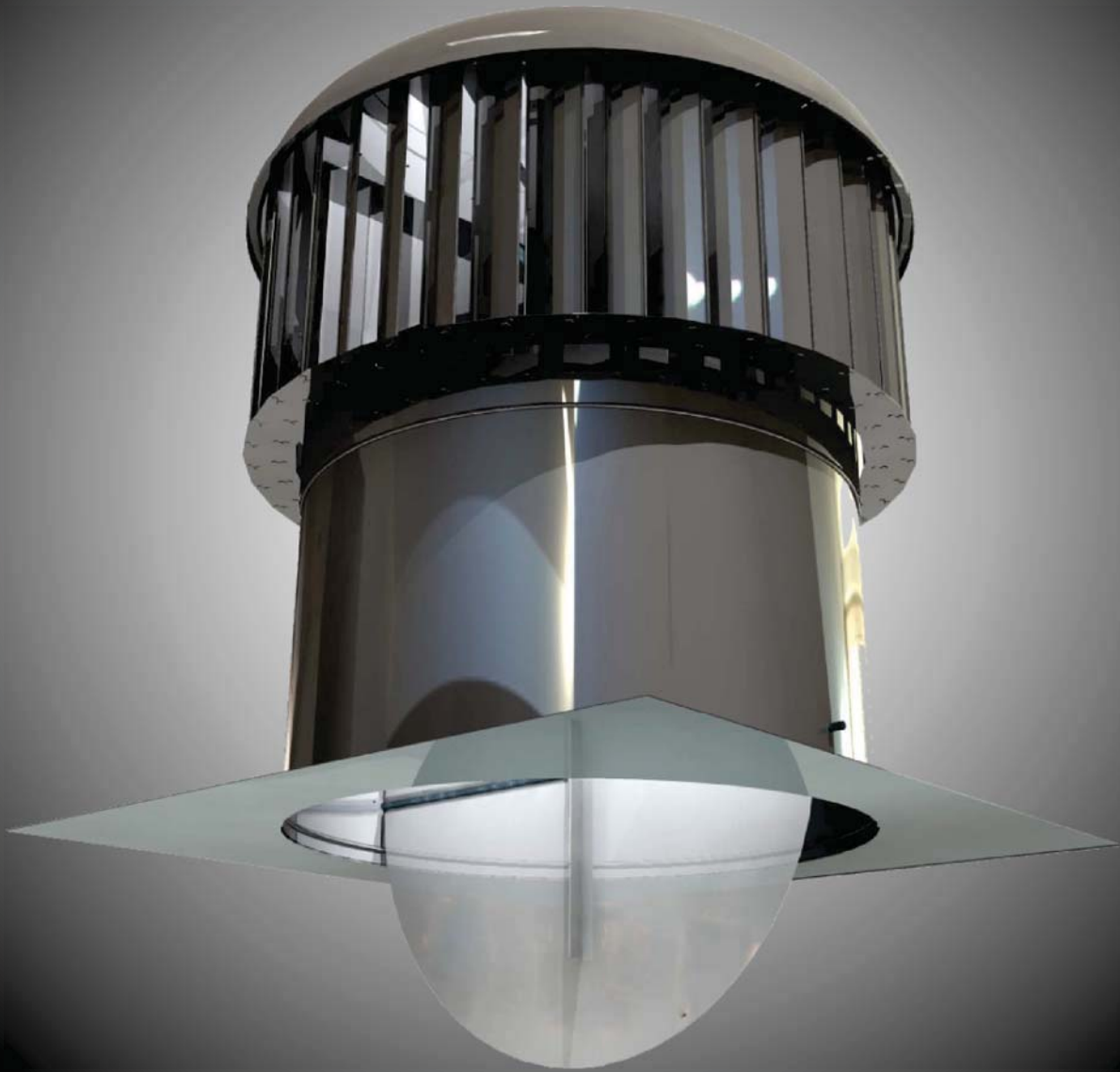


# EXHAUST TURBINE



Industrial Wind Driven  
Turbine Ventilation

# EXHAUST TURBINE

Performance Table			
Tempest Size	Exhaust Capacity		
	3.7 mph	7.5 mph	9.9 mph
24"	1,314 cfm	2,339 cfm	3,009 cfm
36"	3,305 cfm	5,721 cfm	7,331 cfm

The **EXHAUST TURBINE** is a wind driven roof exhaust fan. This natural ventilator is an alternative to traditional industrial ventilators that perform poorly and consume energy. Natural Ventilation is proven to be effective and keep costs down.



## Benefits Include:

- No Electrical Operating costs
- No Wiring Costs
- Designed to Withstand Adverse Weather
- Low Maintenance
- Low Structural Impact
- Quiet Operation
- 15 Year Warranty

In comparison to its motor powered competition, the **EXHAUST TURBINE** excels at all levels!

Why spend over \$14,000 to operate a single exhaust fan when you could do it for **FREE!?!**

36" Powered Exhaust Fan	Cost to Operate Compared	36" Tempest Exhaust Turbine
\$1,025.00	Annual Electricity**	\$0.00
\$250.00	Annual Maintenance*	\$0.00
11 Years	Expected Life	20+ Years
<b>\$14,547.75</b>	<b>Lifetime Cost</b>	<b>\$0.00</b>
2 Years	Warranty	15 Years
10,000	Maximum CFM	7,331cfm

\*\*based on .10 per kWh  
\*greasing, belt and motor changes

● ● ● ● ●  
SOUTHWEST **SOLUTIONS** GROUP  
business organization systems