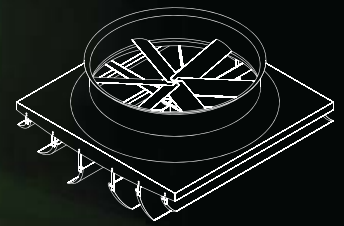


7ft Directional Fan



You Are Not Out Of Reach At 200 Feet

SOUTHWESTSOLUTIONSGROUP
business efficiency systems



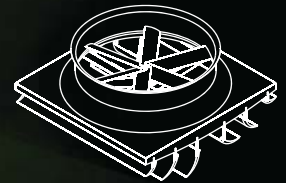
7ft Directional Fan

**The Affordable Choice For
Your Ventilation Needs.**

www.southwestsolutions.com

Toll Free 1-800-803-1083

7ft Directional Fan

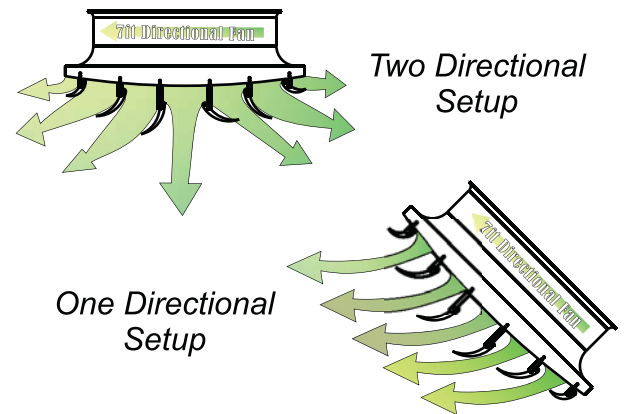
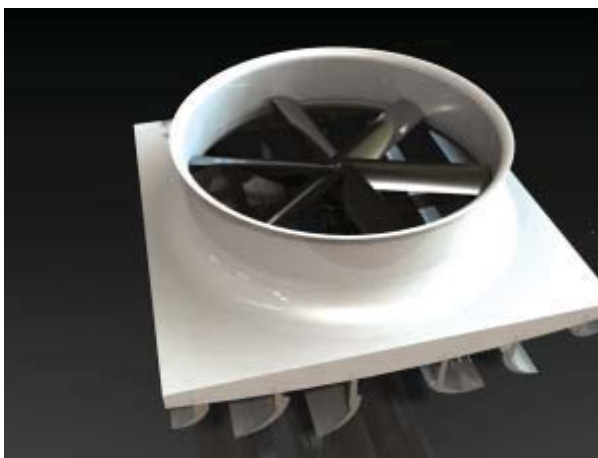


Reduce Your Heating and Cooling Costs

Southwest Solutions is providing an economical and practical way to provide air movement to your building. This is accomplished by the 7ft Directional Fan system and its ability to move large quantities of air while reducing your heating and cooling costs by up to 50%.

Technical Specifications and Features

- Moves in excess of 80,000 cfm.
- Weight of 375 lbs fully assembled.
- Motor is 2.2 kw on high and 0.3 kw on low 230/460 VAC.
- Belt drive runs 300 rpm on high and 50 rpm on low.
- Heavy duty pulley and bearing assembly.
- Adjustable airfoil deflectors optimize air throw distance and direction.
- Throws air 30.5 m on both sides for a total floor coverage of 61 m x 10.7 m.
- Optional variable frequency drive.
- Balanced 1.8 m corrosion resistant 6 paddle aluminum blade.
- 6 directional air flow deflectors.
- Can reduce heating and cooling costs up to 50%.
- Extremely quiet operation on all speeds.



Applications

- Ideal for dairy barns as this fan will provide cow cooling, insect control, drying of bedding and employee comfort.
- Perfect for industrial buildings as this fan can cover over 1393.5 m² and can create an air curtain effect over large doors.
- Can be mounted on steel post, building column or suspended from the ceiling (All optional).
- Ideal for "high rack aisles."
- Also ideal for large turkey or hog buildings, greenhouses, factories, warehouses, processing plants and stadiums.

The Affordable Choice For Your Ventilation Needs.

Contact us for our complete line of ventilation products and to have a system designed for your ventilation needs. Southwest Solutions recognizes that energy savings is a top priority in today's economic and social environment.