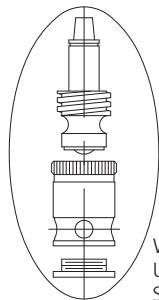
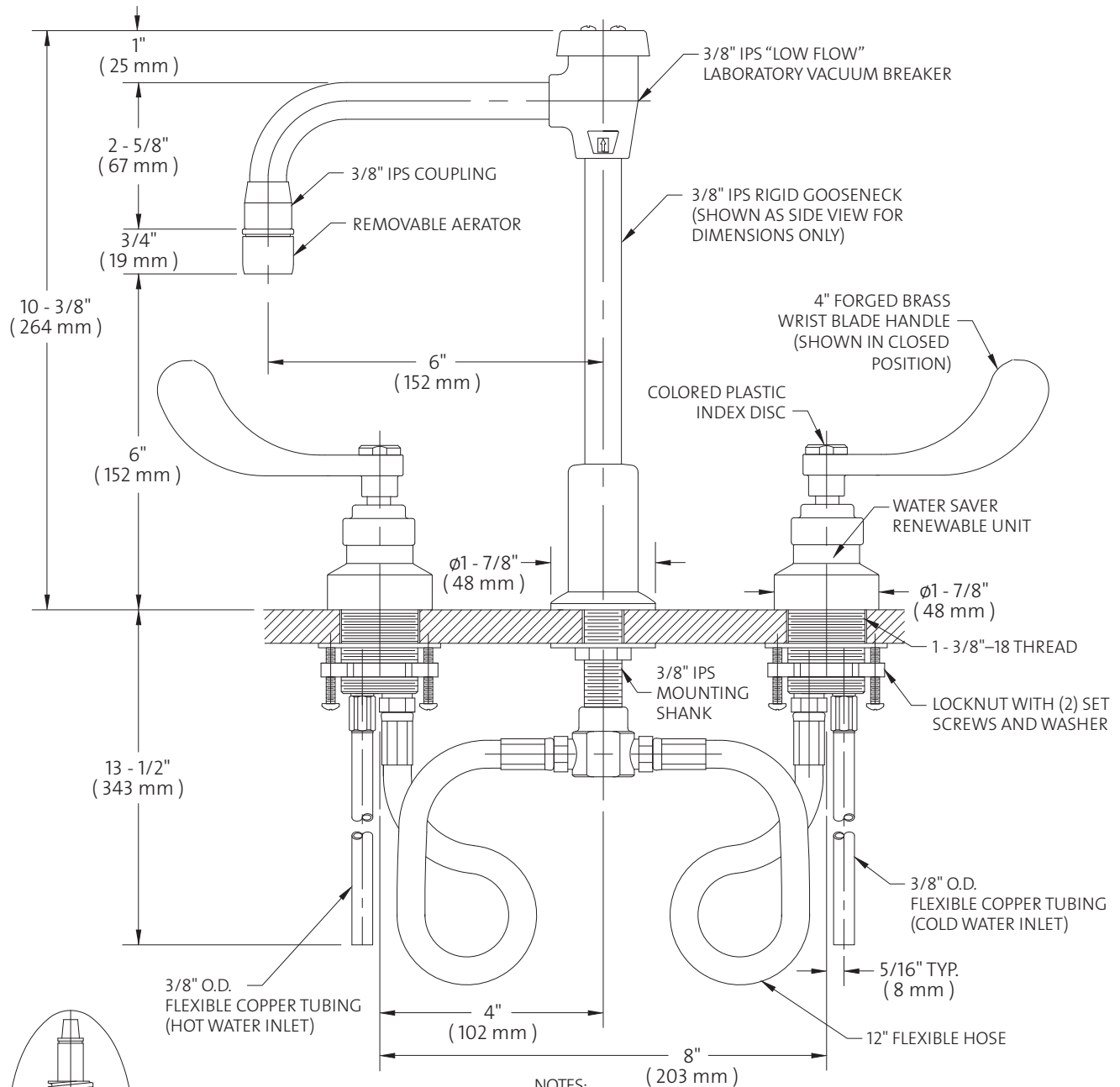


- **L2221VB** Laboratory Mixing Faucet, Deck Mounted, 6" Rigid Vacuum Breaker Gooseneck, Aerator, Wrist Blade Handles
- **L2222VB** Same as Above Except with 6" Swing Vacuum Breaker Gooseneck
- **L2224VB** Same as Above Except with 6" Rigid/Swing Vacuum Breaker Gooseneck



WATER SAVER RENEWABLE UNIT WITH REPLACEABLE STAINLESS STEEL SEAT

Measurements may vary ± 1/4".



NOTES:

1. FIXTURE IS CERTIFIED BY CSA INTERNATIONAL TO COMPLY WITH ASME A112.18.1M AND CSA B125.1.
2. VACUUM BREAKER IS CERTIFIED TO COMPLY WITH ASSE 1001.
3. VALVES AND GOOSENECK ARE FULLY ASSEMBLED AND FACTORY TESTED PRIOR TO SHIPMENT.
4. PROVIDE (2) 1 - 3/8" DIAMETER HOLES FOR VALVES AND (1) 3/4" DIAMETER HOLE FOR GOOSENECK.